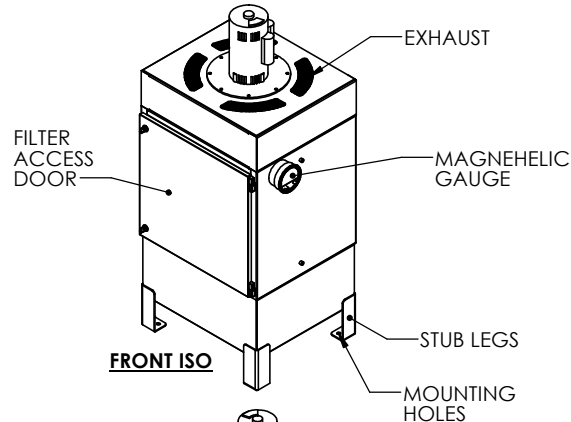
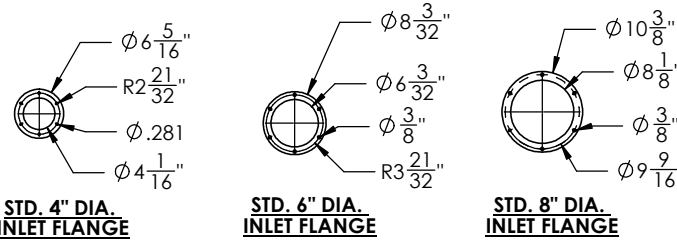
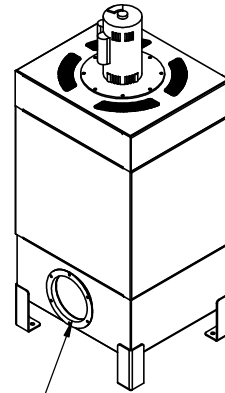


MACHINEMASTER Junior	OIL MIST COLLECTOR SPECIFICATIONS		
MODEL	MM-JR-LS	MM-JR	MM-JR-HS
AIRFLOW (CFM)	400	600	1000
TOTAL SP. (INCHES WG.)	3.3	4	5.5
EXTERNAL SP. (INCHES WG.)	.8	1.5	3
MOTOR RPM	3450	3450	3450
MOTOR HP	.75	1	2
MOTOR FULL LOAD AMPS	1.0	1.8	3.4
PRIMARY VOLTAGE	460V/3PH/60HZ	460V/3PH/60HZ	460V/3PH/60HZ
DRY WEIGHT (LBS)	240	265	280
INLET DIA. INCHES	4	6	8
INTEGRAL FAN	TEK225, INJECTION MOLDED GRP POLYIMIDE, BACKWARD CURVED AIRFOIL, AMCA-RATED.	TEK250, INJECTION MOLDED GRP POLYIMIDE, BACKWARD CURVED AIRFOIL, AMCA-RATED.	TEK280, INJECTION MOLDED GRP POLYIMIDE, BACKWARD CURVED AIRFOIL, AMCA-RATED.
STAGE 1 FILTER	(1) IMPINGER; 24"X24"X4" ALUMINUM, WASHABLE		
STAGE 2 FILTER	(1) GALV. METAL MESH; 24"X24"X1" WASHABLE		
STAGE 3 FILTER	(1) V-BOX FILTER; 24"X24"X12" MICROGLASS PAPER MEDIA, MERV 14, GALV. STEEL SIDES, 194 SQ. FT. MEDIA.		
HOUSING CONSTRUCTION	14.16 GA., WELDED STEEL		
EXTERNAL COATING	DURETHANE DTM BY PPG; URETHANE MASTIC COATING, COLOR: VENT BLUE		
FILTER MONITORING	(1) DIFFERENTIAL PRESSURE GAUGE.		
DRAIN	CROSS BROKE BOTTOM TAPERS TO DRAIN COUPLING. 3/4" NPT FEMALE FLUSH WELDED TO BOTTOM.		
OPTIONAL ACCESSORIES	<p>MOTOR CONTROLS: NEMA 12 START/STOP WITH OVERLOAD PROTECTION.</p> <p>HEPA FILTRATION: (1) 24"X24"X6" MICROGLASS HEPA FILTRATION CELL.</p> <p>CARBON FILTRATION: 24"X24"X2", 26GA CRS PAINTED, REFILLABLE, 4 FILL HOLES ON TOP, 17 LBS OF 100% CARBON.</p> <p>OTHER: CUSTOM INLETS, HANGING KITS, DRAIN HOUSE WITH 5 GALLON BUCKET, ADDITIONAL GAUGES, DAMPERS, SILENCERS, TRANSITIONS, ELBOWS, DUCTWORK.</p>		

MACHINEMASTER™
OIL MIST COLLECTORS

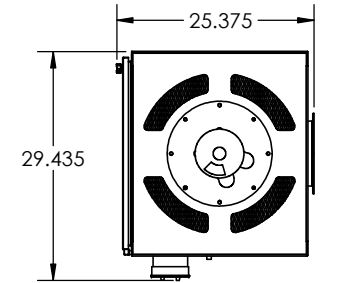


FRONT ISO

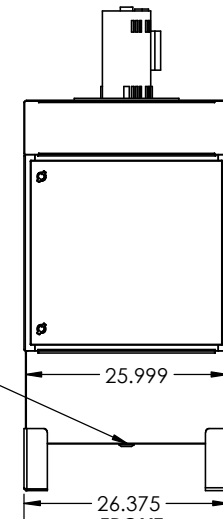


BACK ISO

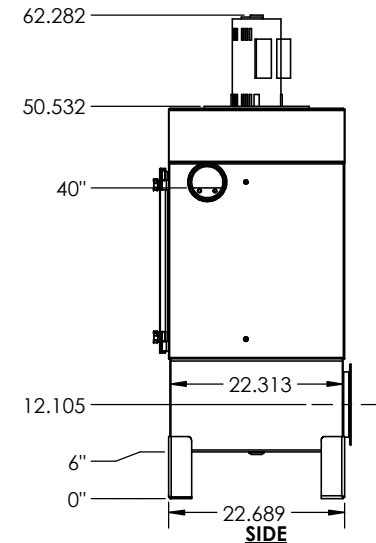
INTAKE;
CAN BE PLACED
AT UNDERSIDE OF
UNIT TO MOUNT
ON TOP OF A
CNC MACHINE.
REMOVES STUB LEGS



TOP



FRONT



SIDE

*NOTE: THE IMPLEMENTATION OF DUST COLLECTORS AND VENTILATION EQUIPMENT ON AN INDUSTRIAL PROCESS IS APPLICATION SPECIFIC. IT IS THE SOLE RESPONSIBILITY OF THE END USER TO COMPLY WITH LOCAL REGULATIONS FOR THEIR PROCESS INCLUDING ANY INDUSTRY RECOGNIZED STANDARDS. PARTICLE SIZE DISTRIBUTION AND EXPLOSIVITY TESTING OF PROCESS STREAM CONSTITUENTS IS STRONGLY RECOMMENDED FOR ALL APPLICATIONS.

* DIMENSIONS ARE IN INCHES.
* DO NOT SCALE DRAWING.
* DUE TO CONTINUOUS IMPROVEMENTS DESIGN MAY VARY.

NAME	DATE	TITLE
WCF	7/3/2018	MM-JUNIOR
DRAWN BY:		
CHECKED		
ENG APPR.		
MFG APPR.		
Q.A.		<p>PROPRIETARY AND CONFIDENTIAL</p> <p>THE INFORMATION CONTAINED IN THIS DRAWING IS THE SOLE PROPERTY OF VENTILATION + PLUS EQUIPMENT INC.. ANY REPRODUCTION IN PART OR AS A WHOLE WITHOUT THE WRITTEN PERMISSION OF VENTILATION + PLUS EQUIPMENT INC. IS PROHIBITED.</p>
SIZE	DWG. NO.	REV
B	MM-JUNIOR-DRAWING	N/A
SCALE: N/A		SHEET 1